

4) Echinococcus granulosus (Dog tapeworm)

classification

Phylum - Platyhelminthes

class - Cestoda

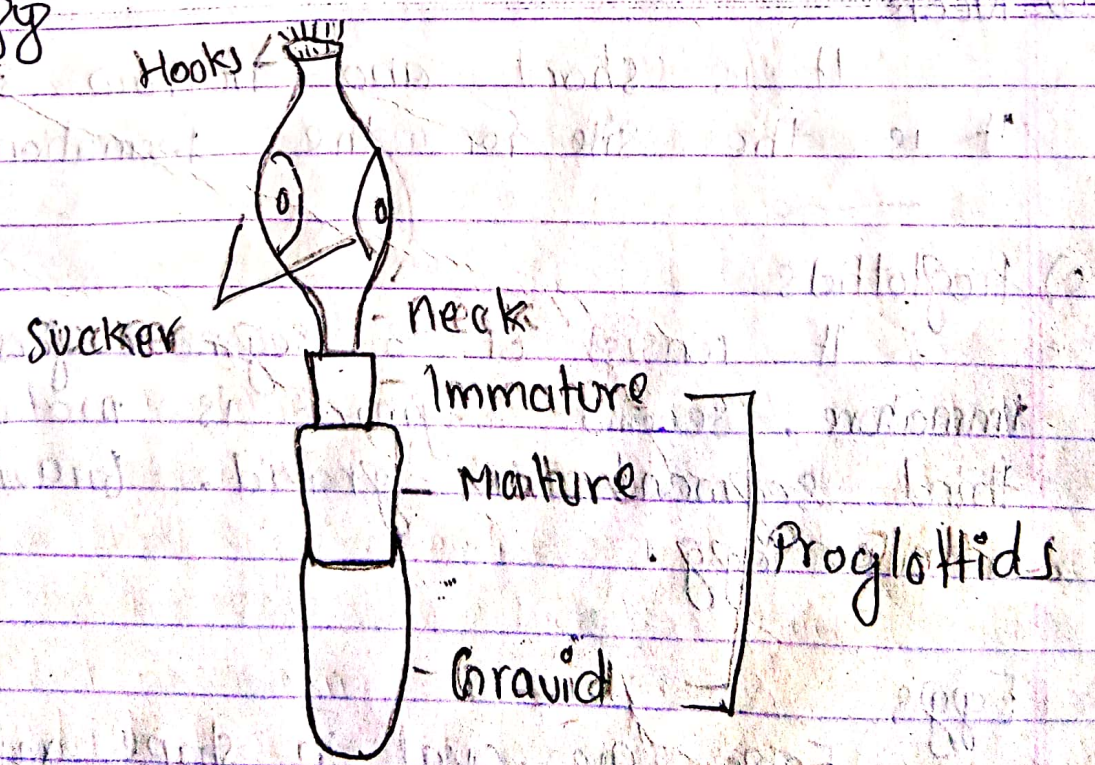
Genus - Echinococcus

Species - granulosus

Habit / Habitat

Although it is worldwide in distribution, it is most commonly found in those countries where sheep and cattle are rearing more and has intimate association between man, sheep and dog. It is also reported from Nepal. Adult dog tapeworm is found in the small intestine of dog and canine animal. Man and sheep contain the larval form.

Morphology



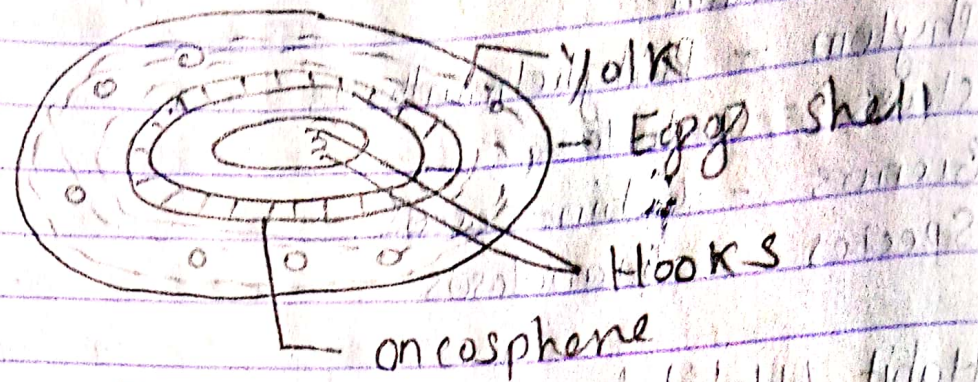


Fig : Egg

Adult tapeworm is a small tapeworm which measures about 5-6 mm in length. It consists of neck, scolex and proglottids.

a) Scolex

It has four suckers and a rostellum with a double row of hooks.

b) Neck

It is short and narrow structure with It is the site for the formation of proglottids.

c) Proglottids

It consist of 3 segment, first segment is immature, second segment is mature and third segment is gravid. Gravid segment contain egg.

Eggs

Eggs are oval in shape and resembles with the eggs of Taenia solium. It contain hexacanth embryo. It is the infective to the

man, cattle, sheep and other herbivorous animals.

larval form

The larval form is found inside the hydatid cyst. It is found in the secondary host, i.e. sheep. Hydatid cyst contain scolex of future adult worm. On entering into primary host that is dog, scolex develops into adult worm.

Symptoms

- > Jaundice may caused
- > Infection on bone
- > Infection on kidney
- > Infection on eyes

Treatment

- > Praziquantol
- > Dichlorophen

Preventive measures

- > Personal hygiene
- > Wash hand after playing with dog.
- > Periodic testing and de-worming of dogs.